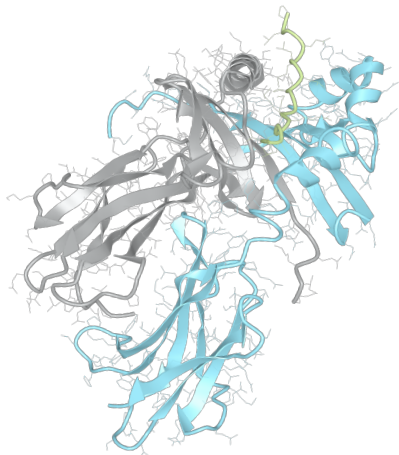


Product datasheet



sHLA– DQB1*04:01 DQA1*02:01

DQB1*0401, DQB10401, DQB1*04, DQB04, DQ4
DQA1*0201, DQA10201, DQA1*02, DQA02

Serological Name	DQ4
Peptide Load	Endogenous
Modification	Unmodified
Conjugation	Unconjugated
SKU	DQB10401/DQA10201

Product Description

Allele Name	DQA1*02:01 DQB1*04:01
HLA Class	HLA Class II
HLA Gene Locus	HLA-DQ
Alternative Allele Name A Chain	DQA1*0201, DQA10201, DQA1*02, DQA02
Alternative Allele Name B Chain	DQB1*0401, DQB10401, DQB1*04, DQB04, DQ4
Description	Recombinant, truncated Class II soluble Human Leukocyte Antigen (sHLA), naturally folded and glycosylated, loaded with endogenous peptides.
Serological Name	DQ4
Serological Split	-
Allele Frequency [World Population]	
A chain	10.1%
B chain	2.6%

Associated products

[DQB10401/DQA10201bio](#)
[DQB10401/DQA10201pe](#)

Product Specification

Product name	HLA-DQB1*04:01/DQA1*02:01
HLA Species	Human
Host Cell Line Species	Mouse
Clone Designation	EP197-C03
Tail Specification	ZP
Peptide Load	Endogenous
Modification	Unmodified
Conjugation	Unconjugated
Complexity	Monomer
Protein Format	Recombinant, truncated, zipper-stabilized, soluble, non-modified, non-labeled, endogenously loaded
Storage Temperature	4°C (This product should be stored undiluted)
Form	Liquid
Concentration	1000.0 µg/ml
Formulation	PBS/0.02% Sodium Azide
pH	7.4
Purification Method	Affinity Chromatography
Grade	Research Use Only [RUO]
Authentication Verification	Sequence Based Typing

Protein Sequences

Alpha Chain Sequence	EDIVADHVAS YGVNLYQSYG PSGQFTHEFD GDEEFYVDLE RKETVWKLPL FHRLR.FDPQ FALTNI AVLK HNLNLIKRS NSTAATNEVP EVT VFSKSPV TLGQPNTLIC LVDNIFPPVV NITWLSNGHS VTEGVSETSF LSKSDHSFFK ISYLTFLPSA DEIYDCKVEH WGLDEPLLKH WEPEIPAPMS EVDGGGGGAQ LEKELQALEK ENAQLEWELQ ALEKELAQ
-----------------------------	--

Beta Chain Sequence	RDSPEDFVFQ FKGMCYFTNG TELVRGVTRY IYNREEYARF DSDVGVYRAV TPLGRDLDAEY WNSQKDILEE DRASVDTVCR HNYQLELRTT LQRRVEPTVT ISPSRTEALN HHNLLVCSVT DFYPAQIKVR WFRNDQEETT GVVSTPLIRN GDWTFQILVM LEMTPQRGDV YTCHVEHPSL QNPTIIVEWRA QSESAQSKVD GGGGAQLKK KLQALKKKNA QLKWKLQALK KKLAQ
----------------------------	--

Related Products

[DQB10402/DQA10201](#)
[DQB10301/DQA10201](#)
[DQB10602/DQA10102](#)
[DQB10302/DQA10201](#)

Applications

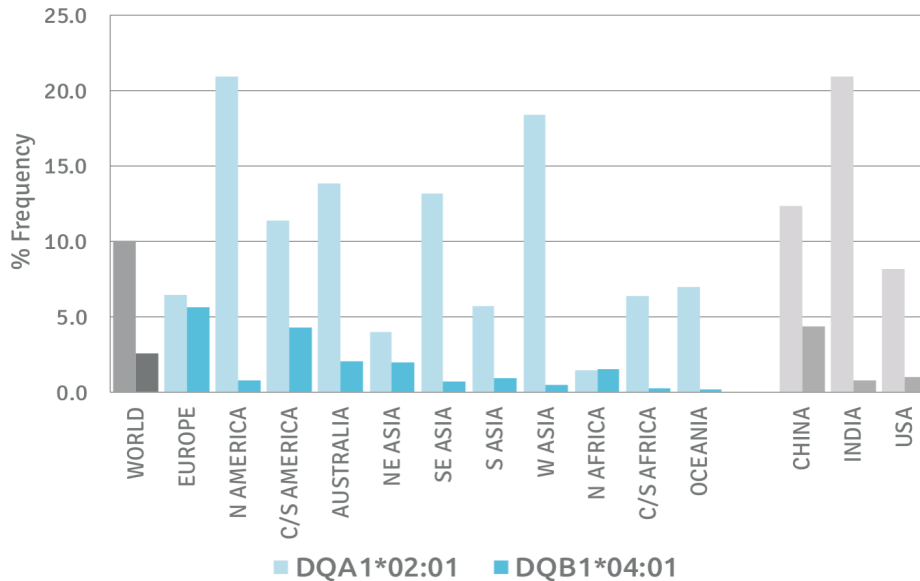
HLA Sandwich ELISAs
 HLA Direct ELISAs
 HLA-Sera Antibody Assays
 HLA Controls in ELISA Assays
 HLA Assay Standards
 HLA Blocking Assays
 HLA Neutralizing Assays
 HLA Competition Assays
 HLA Bead Assays
 HLA Immunization Procedures

Recommended Antibodies

-

Allele Frequency

Worldwide Allele Frequency



Please note:

ALL PRODUCTS ARE FOR RESEARCH USE ONLY. NOT FOR COMMERCIAL USE IN DIAGNOSTIC PROCEDURES.
 For more information, please visit our Policies section on our website. For licensing inquiries, please contact

licensing@hlaprotein.com

HLA Protein
 PURE PROTEIN LLC

Eplet Assignments

DQB1*04:01

Eplet	Polymorphic Residues	Antibody Reactivity
3S	3S	
9F	9F	
13GM	13G14M	
23L	23L	
37YA	37Y38A	
45G	45G	
45GV	45G46V	Yes
46VY	46V 52P 28T	Yes
55R	55R	Yes
56L	56L 71D	Yes
66D	66D67I	
74S	74S 26G	Yes
75V	75V	
77T	77T	Yes
84QL	84Q 86E 87L 89T 90T 125A	Yes
130R	130R	
135D	135D	
167R	167R	
182N	182N	Yes
185I	185I	

Eplet Assignments

DQA1*02:01

Eplet	Polymorphic Residues	Antibody Reactivity
2D	2D 199A	Yes
25FT	25F26T	
40E	40E	Yes
40ERV	40E41R45V	
47KHL	47K52H54L	Yes
61FT	61F 64T 55R	Yes
66IL	66I69L	
75I	75I 161D 163I	
75IL	75I76L	
76L	76L	
129H	129H	
160A	160A	
160AD	160A161D	
175E	175E	